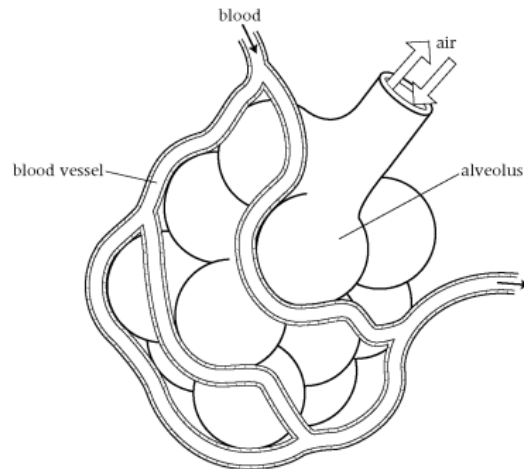


Name: _____ Period: _____ Date: _____

Ms. Randall A & P

Respiratory Gas Exchange

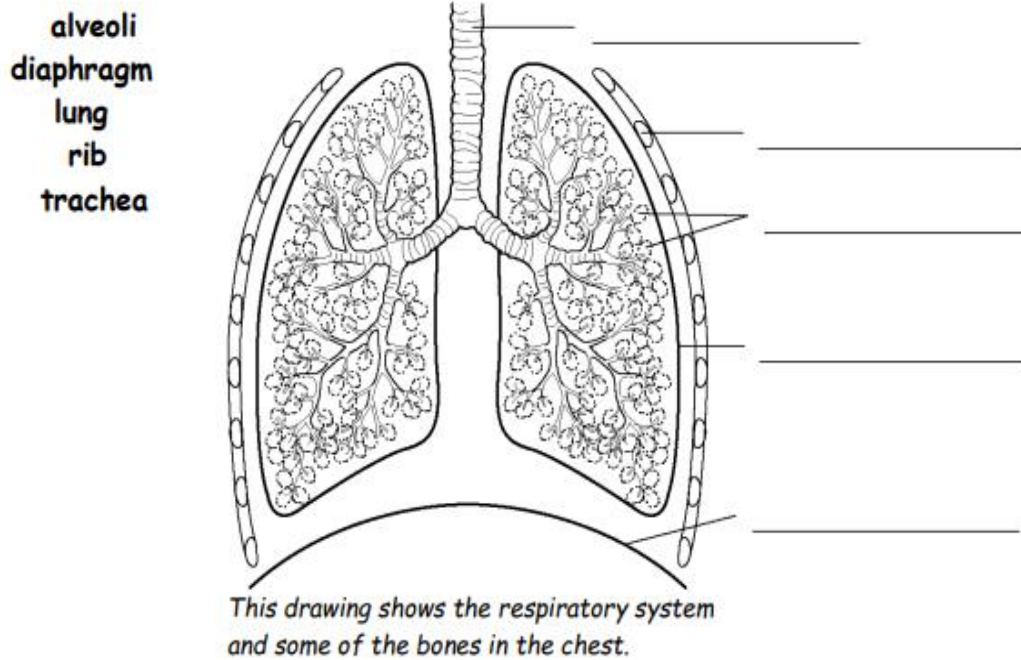
1. The diagram shows an alveoli (air sac) from a lung.



- What type of blood vessels are found surrounding alveoli?

- Draw some red blood cells on the diagram. Do not shade them in.
- Blood cells change color slightly depending on how much oxygen they are carrying (they are bright red when carrying a lot of oxygen). Find two colored pencils, one bright red and one dark red. In the correct areas, shade some of the red blood cells dark red and some of them bright red.
- Draw a labeled arrow showing which direction oxygen particles are going.
- Draw a labeled arrow showing which direction carbon dioxide particles are going.
- Your two arrows show a process that occurs in the lungs. What is the name of this process? _____ . By what means does this process happen? _____ .

2. Label the diagram with the following words



3. Fill in the missing words in these sentences, using the words in the box.

Blood vessels, carbon dioxide, exhaling, heart, inhaling, lungs, oxygen, cellular respiration, deoxygenated, gas exchange

Breathing in is called _____. Air goes into the _____. A gas from the air called _____ diffuses into the blood. A waste gas dissolved in the blood, called _____ goes out of the blood into the lungs. Breathing out is called _____. When we do this, the waste gas goes into the air. Oxygen gas, from the air, is needed by the cells in the body for the process of _____. The _____ is an organ that pumps the blood. It carries _____ blood from the body and to the heart, and onto the lungs so that _____ can take place. The blood travels around the body in tubes called _____.