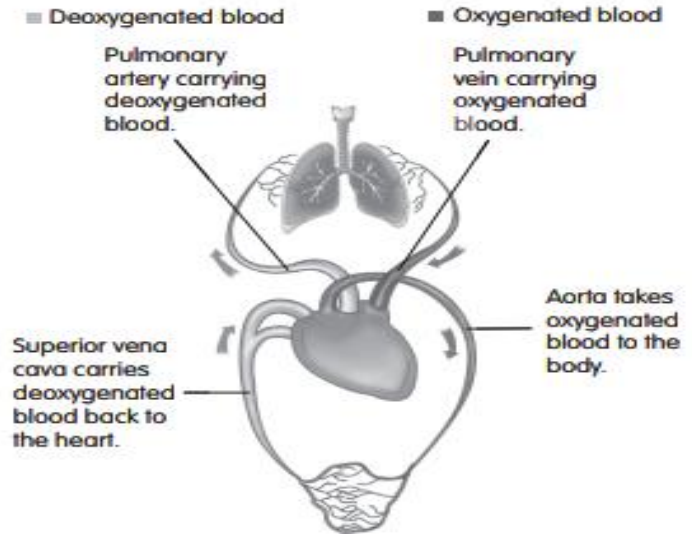


Name: _____ Period: _____ Date: _____

Ms. Randall A & P

Pulmonary and Systemic Circulation

Directions: Study the diagram. Track the pathway of blood in the body, starting at the heart leading into the pulmonary artery. Complete the table below by listing a part of the circulatory system and the pathway the blood takes, using statements from the statement bank. Three of the items have been completed to help you.



Part of circulatory system	Pathway
1. Pulmonary artery	Takes deoxygenated blood out of the heart.
2.	
3.	
4.	
5.	
6. Aorta	Takes oxygenated blood away from the heart to the...
7.	
8.	
9.	
10. Right ventricle	Pumps blood out of the heart to the pulmonary artery.

Statement bank

- Left atrium – oxygenated blood pumped to the...
- Right atrium – pumps deoxygenated blood to the...
- Left ventricle – takes oxygenated blood out of the heart.
- Vena cava – takes deoxygenated blood back to the heart.
- Lungs – blood picks up oxygen and exits lungs via the...
- Pulmonary vein – takes oxygenated blood to the...
- Body – oxygen is used by working muscles and then to the...