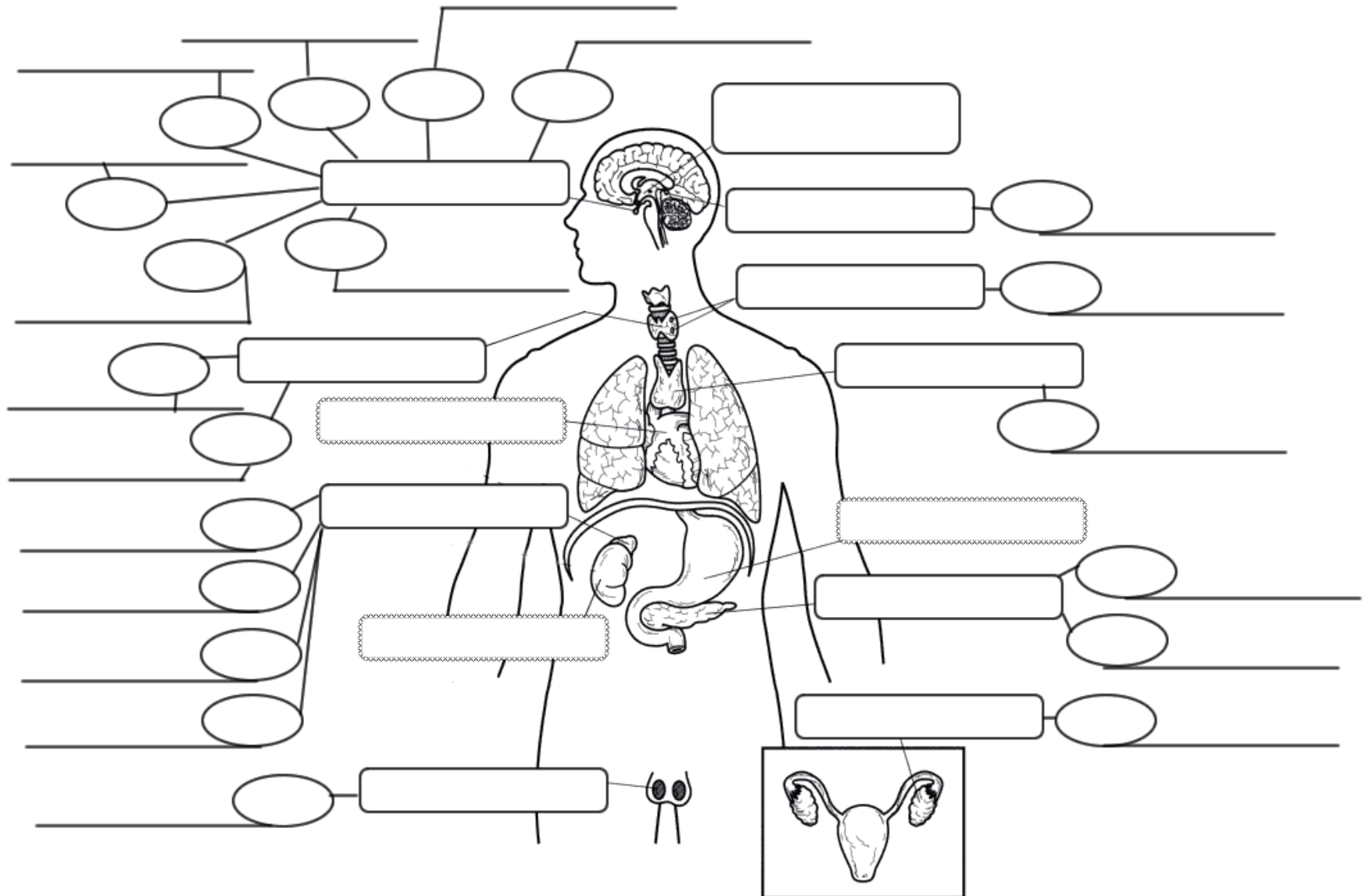


Name: \_\_\_\_\_ Period: \_\_\_\_\_ Date: \_\_\_\_\_

Ms. Randall Anatomy & Physiology

## Endocrine System Concept Map



## Hormone/ Circles:

- *Melatonin*
- *Thymosins*
- *Adrenocorticotrophic hormone (ACTH)*
- *Luteinizing Hormone(LH)*
- *Follicle stimulating Hormone(FSH)*
- *T3 & T4*
- *Calcitonin*
- *Estrogen*
- *Insulin*
- *Glucagon*
- *Parathyroid hormone(PTH)*
- *Testosterone*
- *Oxytocin*
- *Prolactin*
- *Antidiuretic hormone(ADH)*
- *Aldosterone*
- *Epinephrine*
- *Cortisol*
- *Growth Hormone(GH)*
- *Sex Hormones*

## Function/Lines:

- *Immune function*
- *Sleep cycles*
- *Raise blood sugar*
- *Male development*
- *Calcium from bones (used twice)*
- *Contraction(labor)*
- *Uptake of glucose into cells*
- *Female development*
- *Increase heart rate*
- *Sperm and egg production*
- *Milk production*
- *Male/female function*
- *Energy/metabolism*
- *Regulates sex hormones*
- *Stress hormone*
- *Growth*
- *Vasopressin, water balance*
- *Maintain blood pressure*

## Glands/ Organs Boxes:

- *Hypothalamus*
- *Pituitary*
- *Heart*
- *Thyroid*
- *Stomach*
- *Adrenal*
- *Testes*
- *Kidneys*
- *Pineal gland*
- *Thymus*
- *Ovary*
- *Pancreas*
- *Parathyroid*