

1. Hormone levels in the bloodstream _____ as a result of _____.

- A) remain relatively stable, negative feedback
- B) fluctuate throughout the day, negative feedback
- C) change throughout the month, positive feedback
- D) fluctuate throughout the day, positive feedback
- E) change depending on the situation, positive feedback

2. Which of the following is a steroid hormone?

- A) Cortisol
- B) Oxytocin
- C) Antidiuretic hormone
- D) Prolactin
- E) None of the above are steroid hormones

3. Which of the following is false regarding the endocrine system?

- A) Cells are composed of glandular epithelium
- B) Chemical signals are called neurotransmitters**
- C) Chemical signals act upon receptors on target cells
- D) The speed of onset ranges from seconds to hours
- E) The duration of action may be brief or may last for days

4. Which of the following structures is a part of the nervous system and endocrine system?

- A) Thalamus
- B) Pineal gland
- C) Pancreas
- D) Hypothalamus**
- E) Thymus

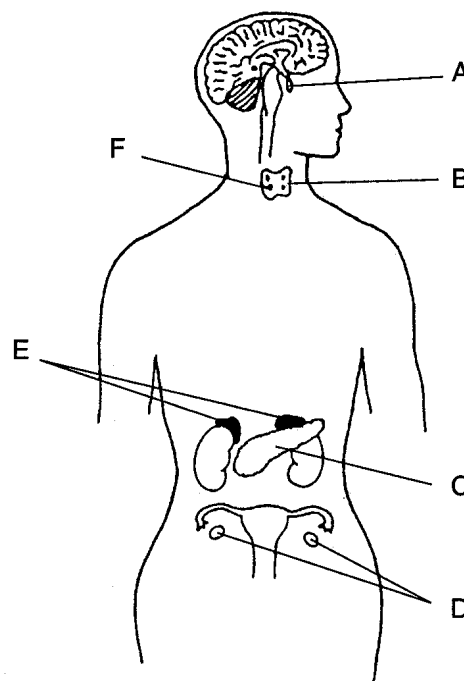
5. Glands with ducts are called _____ glands, whereas glands without ducts are called _____ glands.

- A) exocrine, endocrine**
- B) paracrine, autocrine
- C) exocrine, autocrine
- D) endocrine, exocrine
- E) autocrine, paracrine

6. The endocrine system is made up of cells, tissues, and organs which are collectively called endocrine _____ that release substances called _____ that act on cells called _____ cells.

- A) hormones, neurotransmitters, action
- B) messengers, chemical messengers, target
- C) glands, neurotransmitters, hormone
- D) organs, hormones, action
- E) glands, hormones, target**

7. Base your answer to the following question on the picture below.



Aldosterone is released from this gland

- A) A
- B) B
- C) C
- D) D
- E) E**

8. Which of the following is true regarding antidiuretic hormone?

- A) It is released by the anterior pituitary
- B) It reduces the volume of water the kidneys excrete**
- C) It acts on the pancreas
- D) The secretion of it is regulated by the anterior pituitary
- E) All of the above

9. The secretion of hormones from the pituitary gland are largely controlled by the;
- A) pineal gland B) thalamus
C) thyroid glands **D) hypothalamus**
E) heart
10. Which of the following releases GnRH which stimulates the release of FSH?
- A) Hypothalamus** B) Anterior pituitary
C) Posterior pituitary D) Pineal gland
E) Ovary
11. How does FSH effect the male reproductive system?
- A) It increases spermatogenesis.**
B) It decreases the estrus cycle.
C) It causes the release of sperm from the penis.
D) It causes the formation of eggs.
E) It decreases the contraction of the epididymis.
12. Which of the following hormones is NOT directly involved with the menstrual cycle or child-birth?
- A) FSH B) LH
C) Prolactin D) Oxytocin
E) TSH
13. Parathyroid hormone secretion is regulated by;
- A) positive feedback between the thyroid gland and parathyroid glands
B) positive feedback between the pituitary gland and parathyroid glands
C) negative feedback between the parathyroid glands and the blood calcium concentration
D) negative feedback between the thyroid gland and parathyroid glands
E) negative feedback between the thyroid gland and blood calcium concentration
14. Which mineral is required for normal functioning of the thyroid gland?
- A) Calcium **B) Iodine**
C) Potassium D) Sodium
E) Salt
15. Hormones released by the _____ prepare the body for "fight-or-flight responses."
- A) thymus B) thyroid gland
C) pancreas **D) adrenal glands**
E) pineal gland
16. The adrenal glands are closely associated with the _____.
- A) pancreas B) liver
C) bladder **D) kidneys**
E) heart
17. Release of adrenaline is associated with each of the following EXCEPT
- A) increased heartbeat
B) increased breathing rate
C) increased blood pressure
D) elevated clotting rate
E) conversion of glucose to glycogen
18. Located at the base of the brain; secretes melatonin and helps regulate circadian rhythms
- A) Hypothalamus B) Anterior pituitary
C) Posterior pituitary **D) Pineal gland**
E) Ovary
19. Which of the following is secreted by the thymus?
- A) thymosins**
B) follicle-stimulating hormones
C) thyroxines
D) glucocorticoids
E) triiodothyronines
20. Pancreatic islets include two distinct types of cells; _____ cells which secrete _____ and _____ cells which secrete _____.
- A) alpha, glucagon, beta, insulin**
B) beta, cortisol, alpha, glucagon
C) beta, androgens, alpha, insulin
D) alpha, insulin, beta, cortisol
E) alpha, cortisol, beta, glucagon
21. Which of the following is produced by the testes?
- A) progesterone B) androgens
C) testosterone D) estrogen
E) all of the above

-
22. Which of the following is produced by the ovaries?
- A) **progesterone and estrogen**
 - B) androgens and progesterone
 - C) estrogen and testosterone
 - D) follicle-stimulating hormone and estrogen
 - E) follicle-stimulating hormone and luteinizing hormone
23. Which hormone stimulates testosterone production?
- A) aldosterone
 - B) estrogen
 - C) follicle stimulating hormone
 - D) **luteinizing hormone**
 - E) oxytocin
24. Which structure stores sperm cells?
- A) bladder
 - B) ductus deferens
 - C) **epididymis**
 - D) prostate gland
 - E) seminal vesicle
25. Which structure secretes fluid that lubricates the end of the penis?
- A) **bulbourethral gland**
 - B) epididymis
 - C) prostate gland
 - D) testes
 - E) seminal vesicle
26. Which of the following is the correct order of the layers of the uterine wall (from innermost to outermost)?
- A) **endometrium, myometrium, perimetrium**
 - B) endometrium, perimentrium, myometrium
 - C) myometrium, perimetrium, endometrium
 - D) perimetrium, myometrium, endometrium
 - E) perimetrium, endometrium, myometrium
27. In which part of the female reproductive system does fertilization occur?
- A) cervix
 - B) Ovary
 - C) **Uterine tube**
 - D) Uterus
 - E) Vagina
28. What happens to an oocyte if it is not fertilized by a sperm?
- A) **It degenerates**
 - B) It divides
 - C) It is reabsorbed into the blood stream
 - D) It remains in the uterus
 - E) It returns to the ovary for the next month
29. Females release _____ egg(s) about every _____ days from puberty to about age _____.
- A) 1, 15, 55
 - B) **1, 28, 50**
 - C) 2, 32, 60
 - D) 2, 20, 45
 - E) 4, 14, 75
30. During which phase of the menstrual cycle is an egg released?
- A) follicular
 - B) luteal
 - C) menstruation
 - D) menarche
 - E) **ovulation**
-

Answer Key

Do Now Unit 8 Endocrine and Reproductive systems

1. A
 2. A
 3. B
 4. D
 5. A
 6. E
 7. E
 8. B
 9. D
 10. A
 11. A
 12. E
 13. C
 14. B
 15. D
 16. D
 17. E
 18. D
 19. A
 20. A
 21. C
 22. A
 23. D
 24. C
 25. A
 26. A
 27. C
 28. A
 29. B
 30. E
-