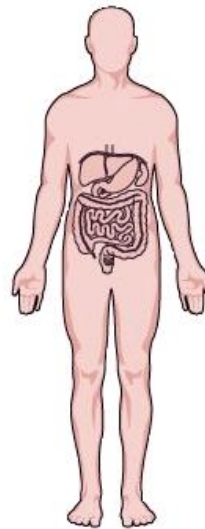
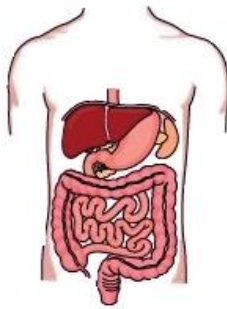
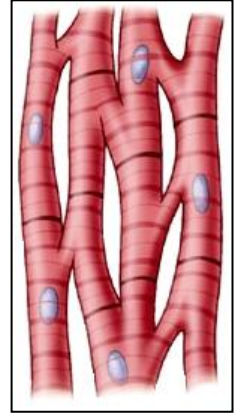
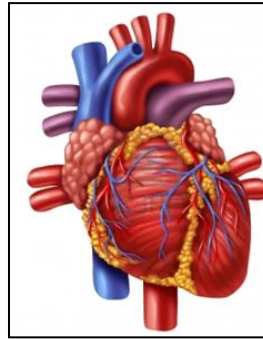
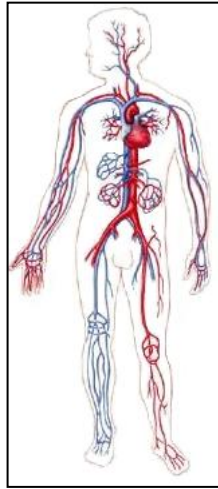
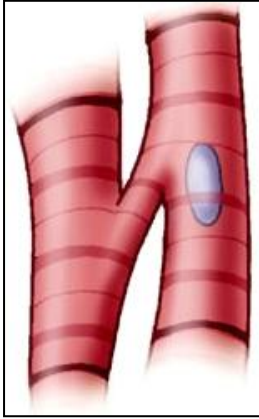


Levels of Organization Sort

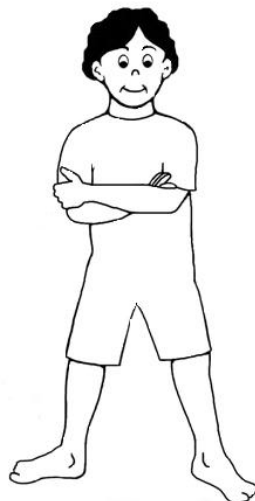
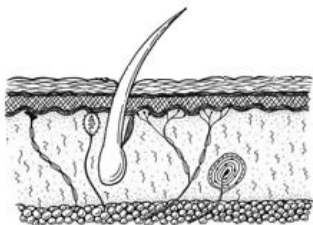
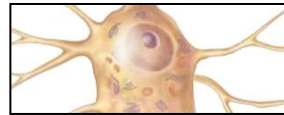
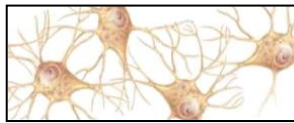
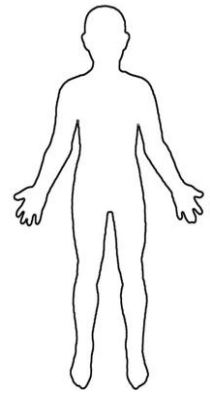
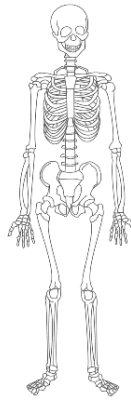
Teachers can use this activity as either review or a form of formative assessment. Students can cut out the images and put the images in order per teacher directions [smallest to largest level; largest to smallest level; identify the organs; identify the cells; etc.]

Make sure students understand that the illustrations are not to scale. Additionally, make sure students understand that when asked to put images in order from smallest to largest and vice versa, they are order the images based on actual level in the human body, not image size.

Levels of Organization Sort: Images



Levels of Organization Sort: Images



**All of
the Skin**